

# Carson City School District 2010 Bond Single Point Security Projects Review

SCHOOL BOARD REPORT  
August 27, 2013



# Controlled Entry Projects


## CMAR Selection & Estimated Budgets

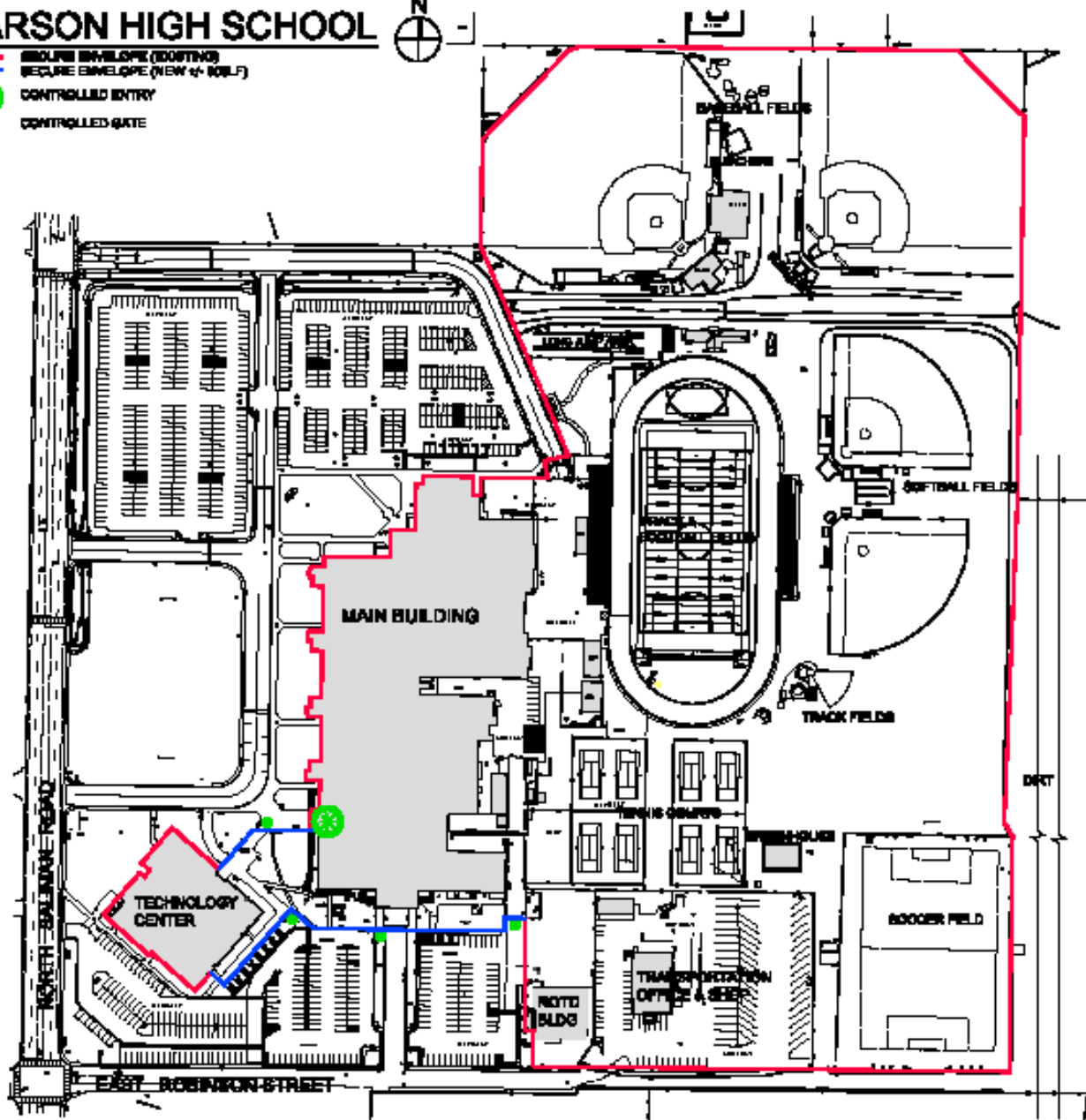
Controlled Entry Project	Selected CMAR Contractor	Estimated Construction Budget	Estimated Completion Date
Carson High School	Miles Construction	\$875,000	<i>April 2014</i>
Fremont & Mark Twain Elementary	Shaheen Beauchamp Builders, LLC	\$1,080,000	<i>Jan 2014 Jan 2014</i>
Fritsch Elementary	CORE Construction Services of NV	\$650,000	<i>Jan 2014</i>
Bordewich Bray Elementary & Student Support Services	Clark & Sullivan Construction	\$700,000	<i>April 2014 Jan 2014</i>
Pioneer High School	SMC Construction	\$675,000	<i>June 2014</i>



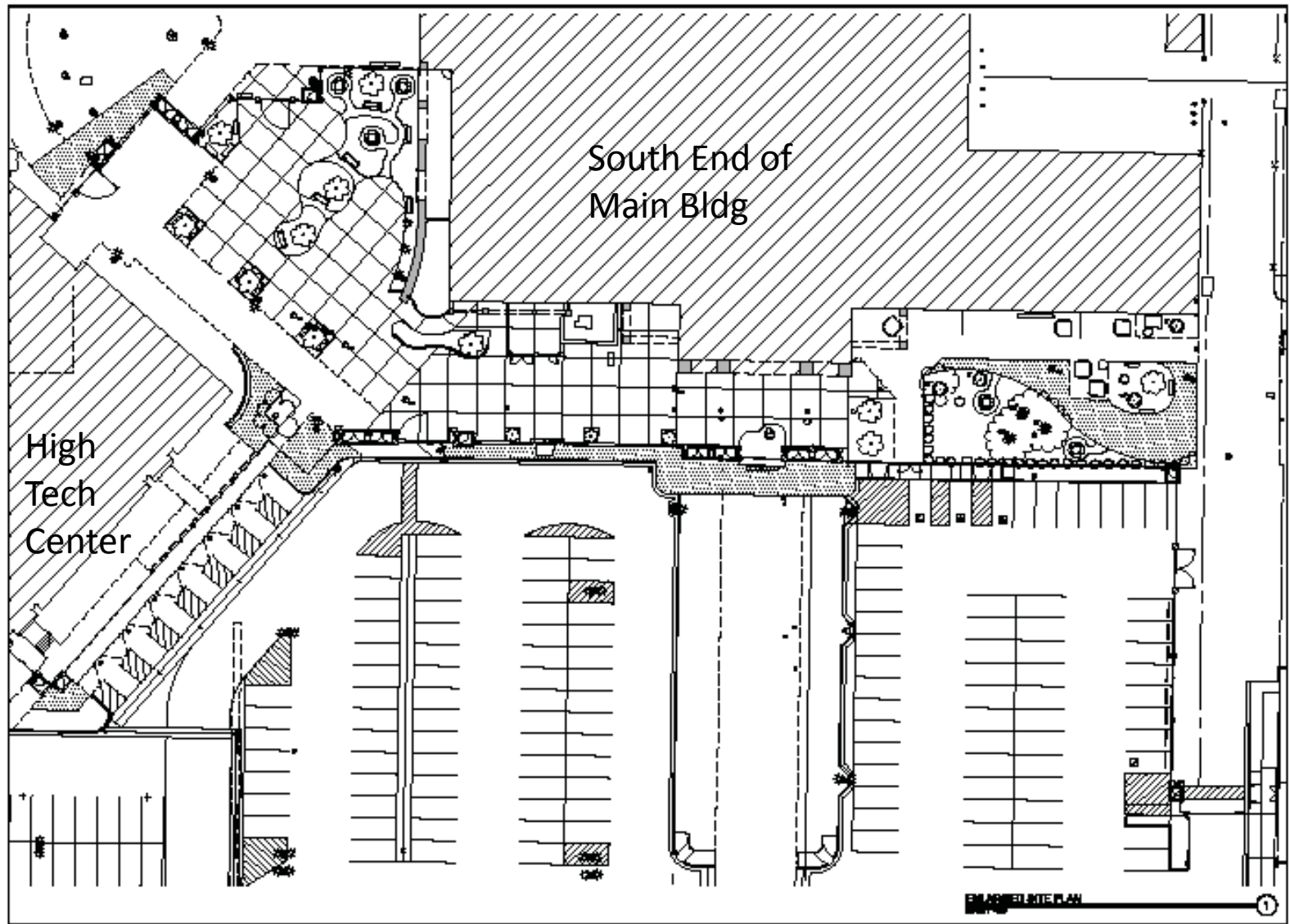
# CARSON HIGH SCHOOL



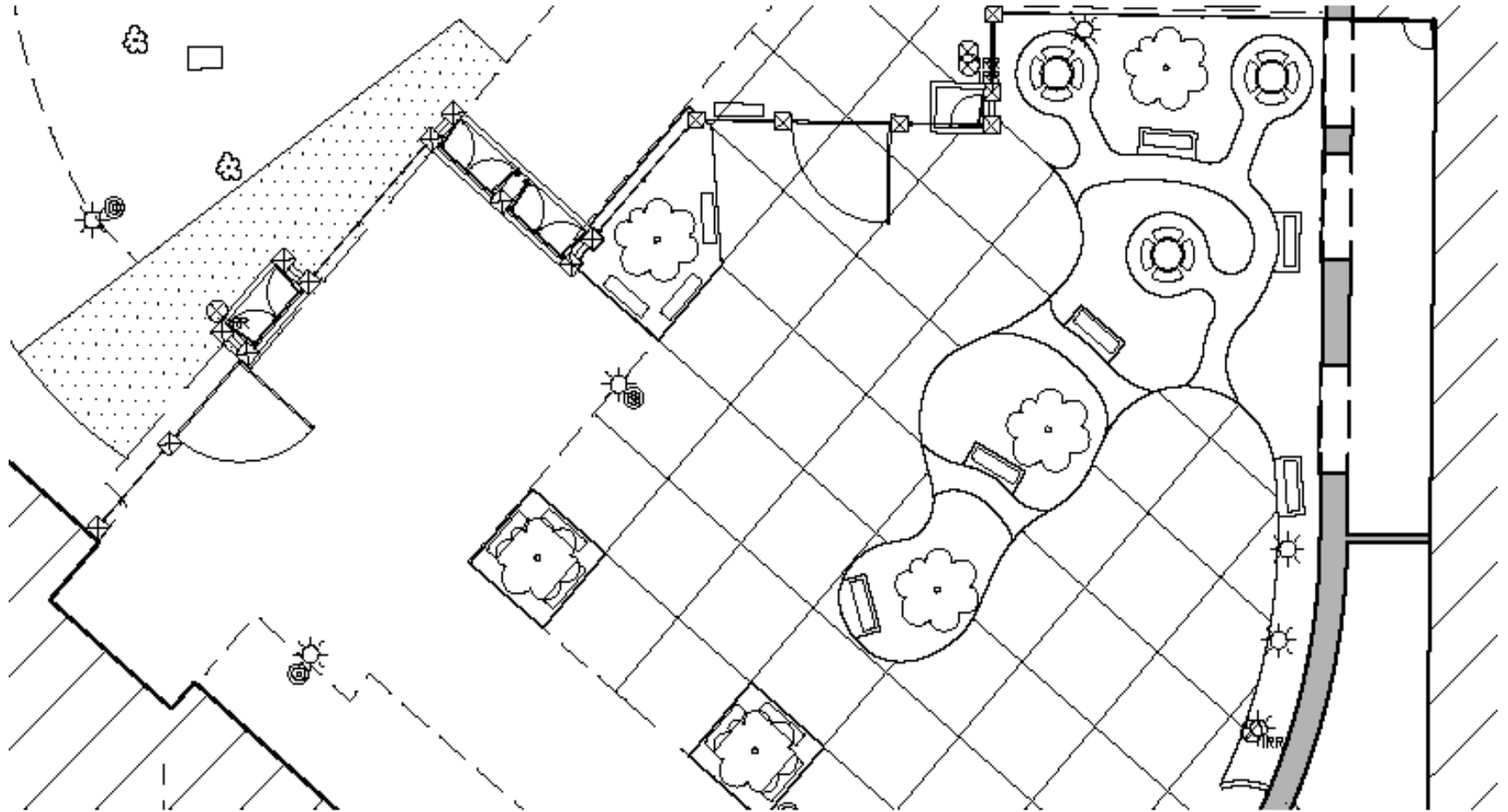
-  SECURE ENVELOPE (EXISTING)
-  SECURE ENVELOPE (NEW w/ NOBL)
-  CONTROLLED ENTRY
-  CONTROLLED GATE



# CHS SITE PLAN AND FENCING

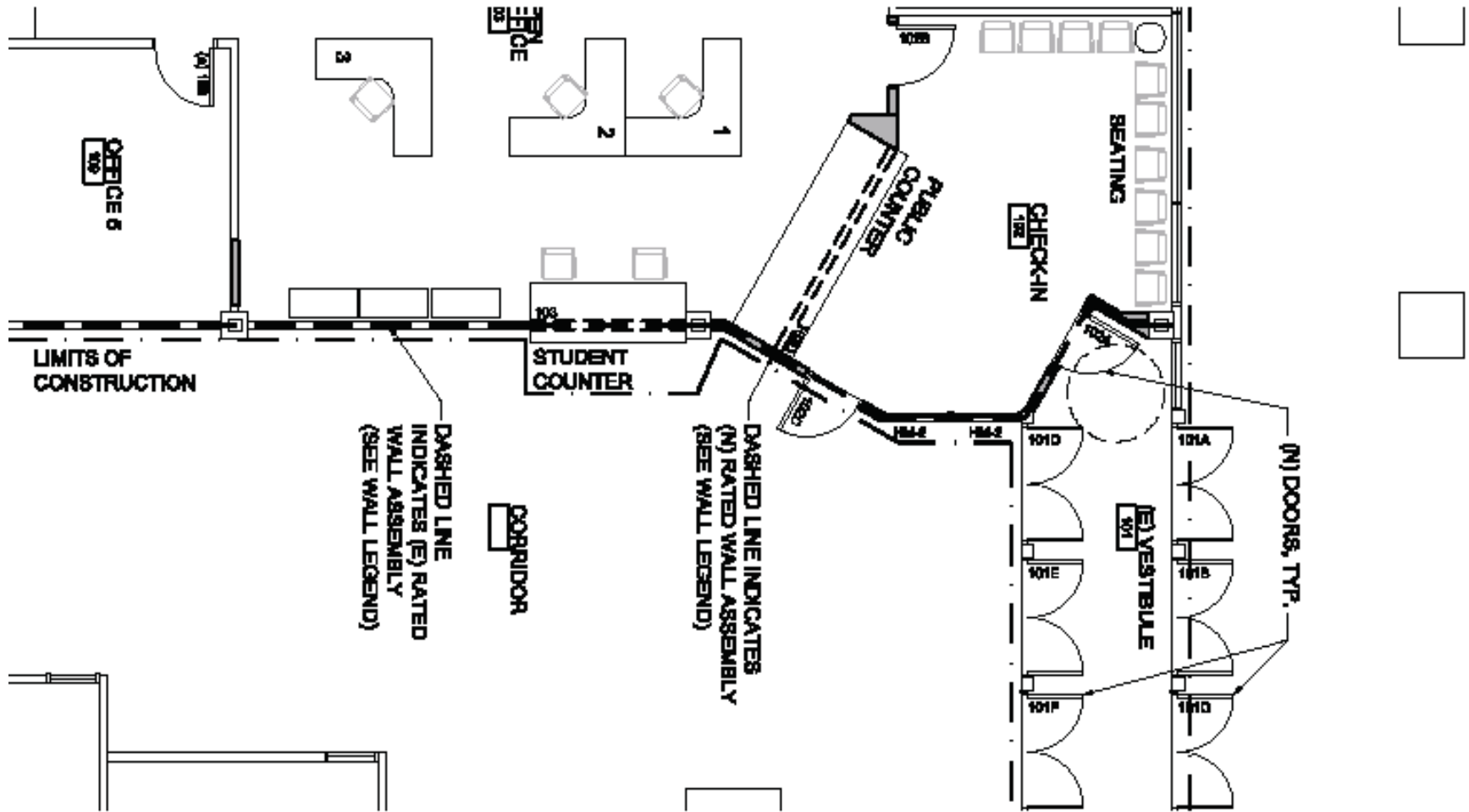


# CHS SITE PLAN AND FENCING





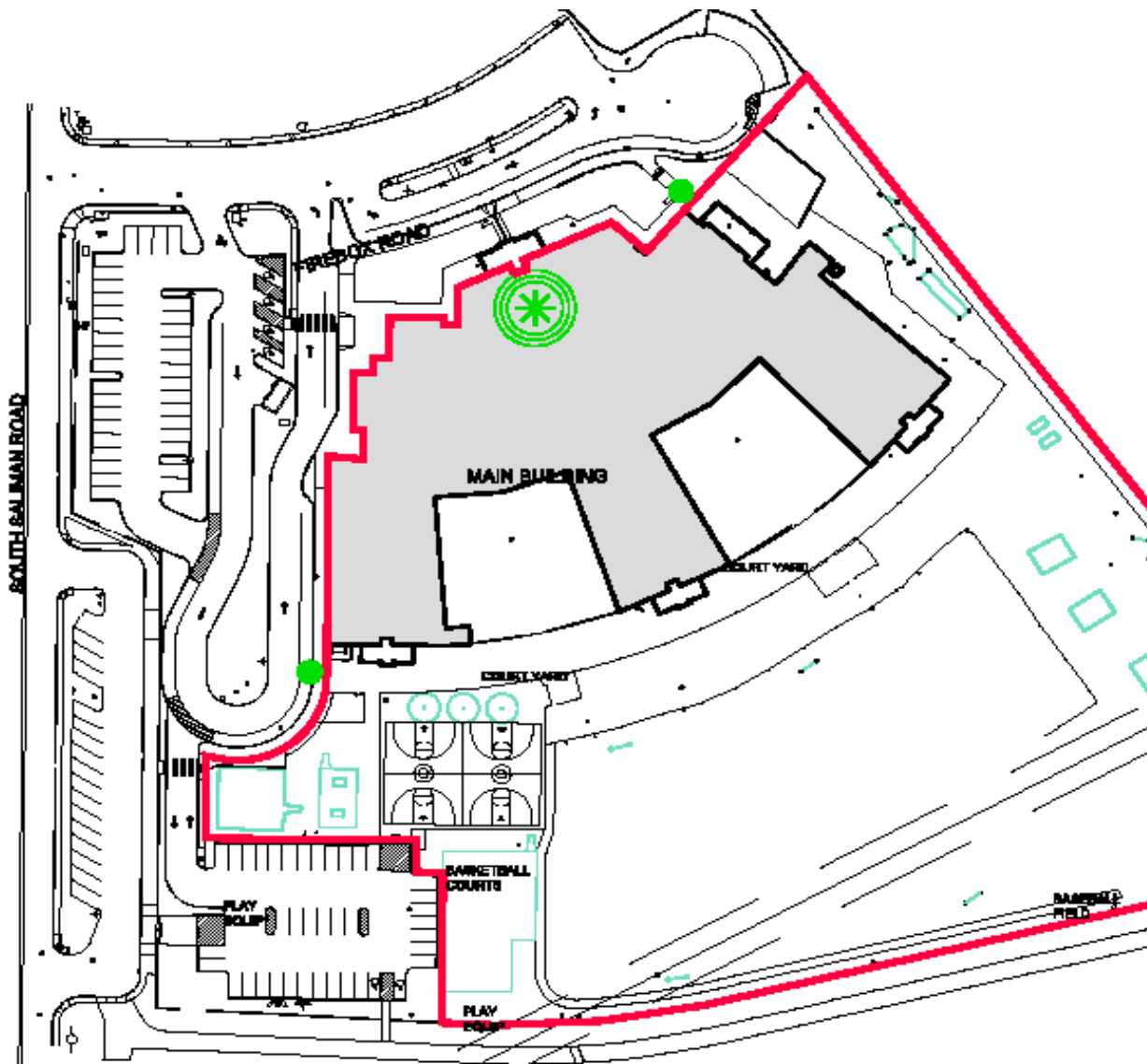
# CHS MAIN ENTRY & CHECK-IN IMPROVEMENTS







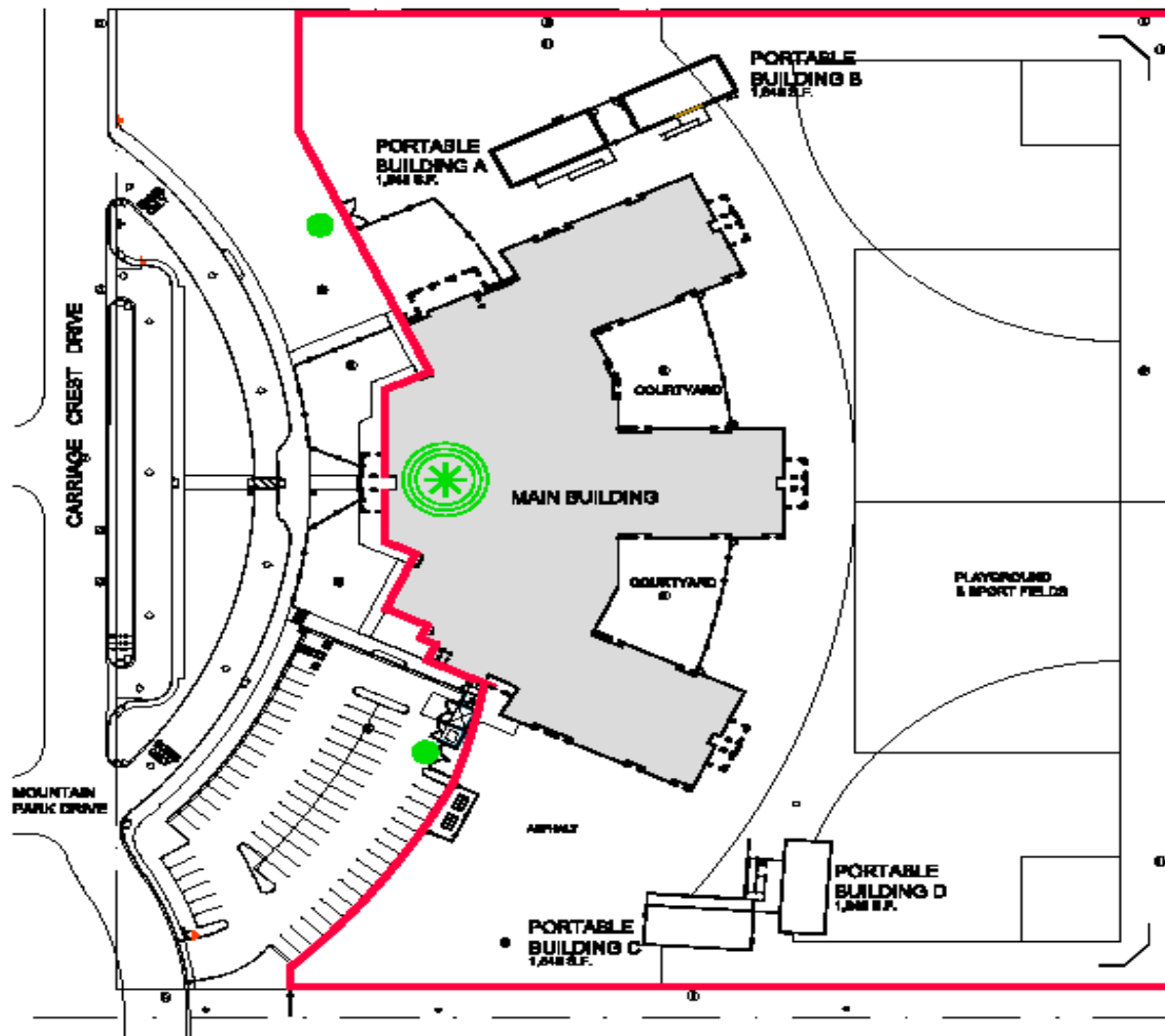




## FREMONT ELEMENTARY SCHOOL

-  SECURE ENVELOPE
-  CONTROLLED ENTRY
-  CONTROLLED GATE



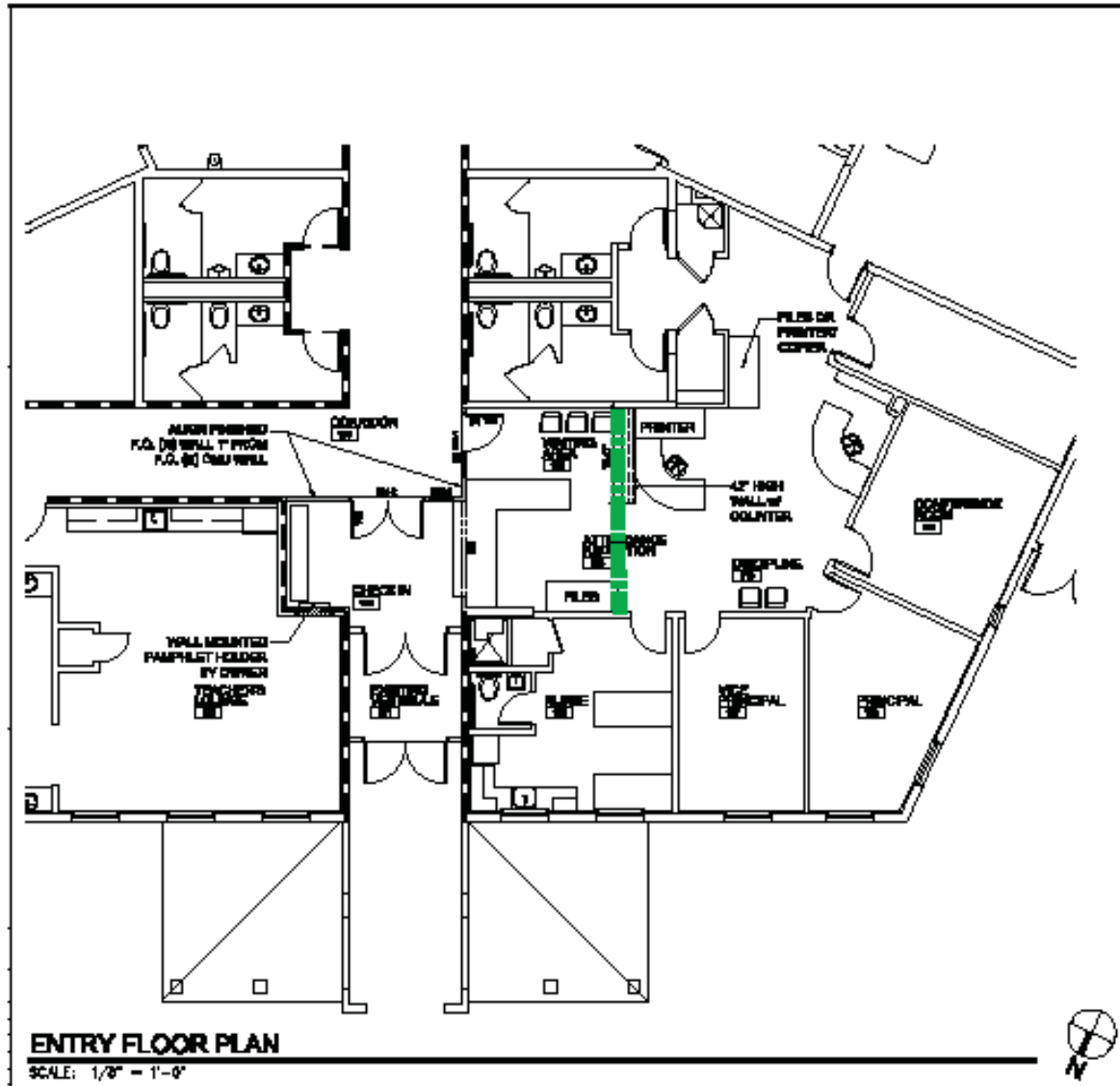


## MARK TWAIN ELEMENTARY SCHOOL

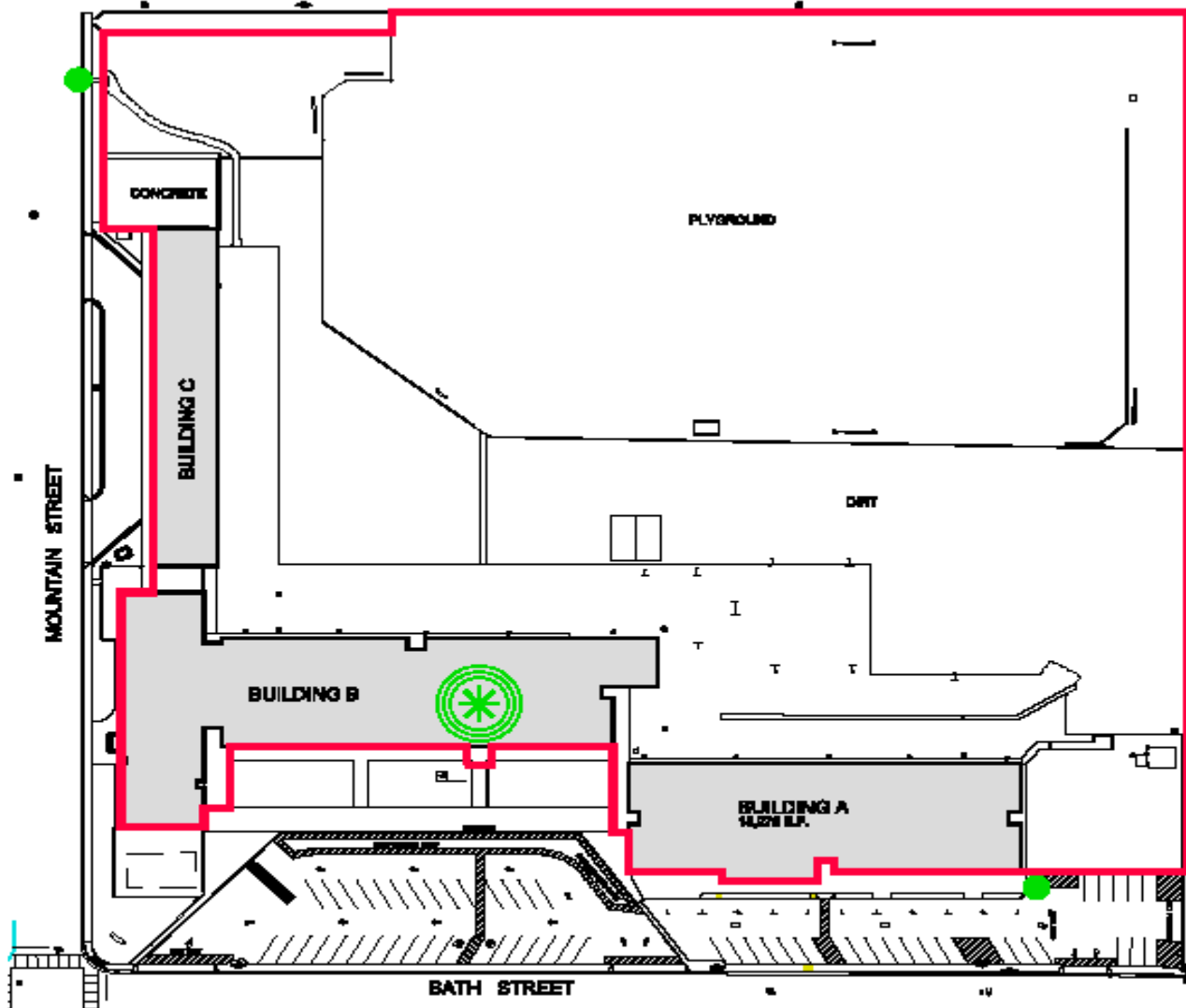
-  SECURE ENVELOPE
-  CONTROLLED ENTRY
-  CONTROLLED GATE



# FREMONT & MARK TWAIN MAIN ENTRY IMPROVEMENTS





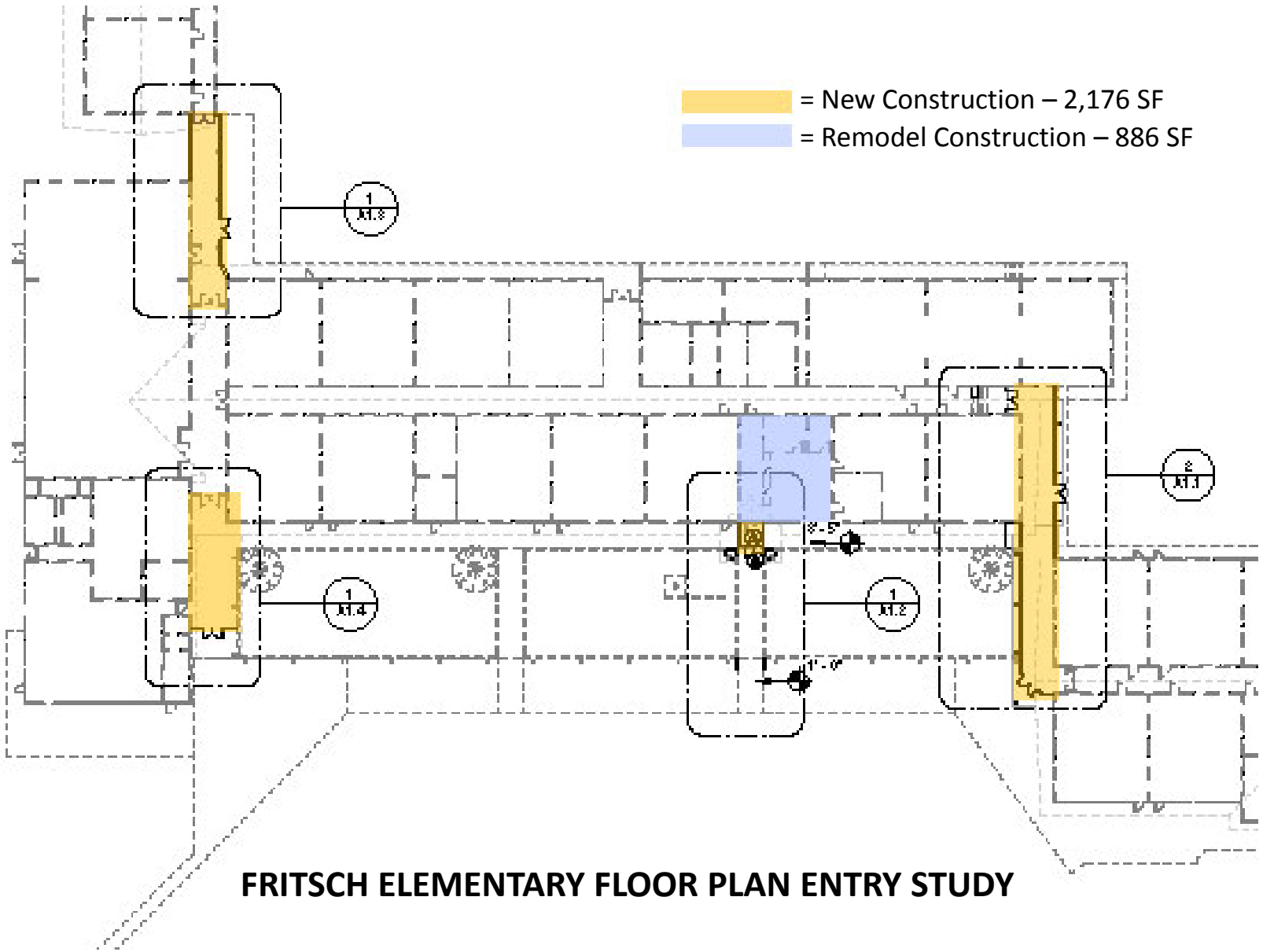


# FRITSCH ELEMENTARY SCHOOL

-  SECURE ENVELOPE
-  CONTROLLED ENTRY
-  CONTROLLED GATE

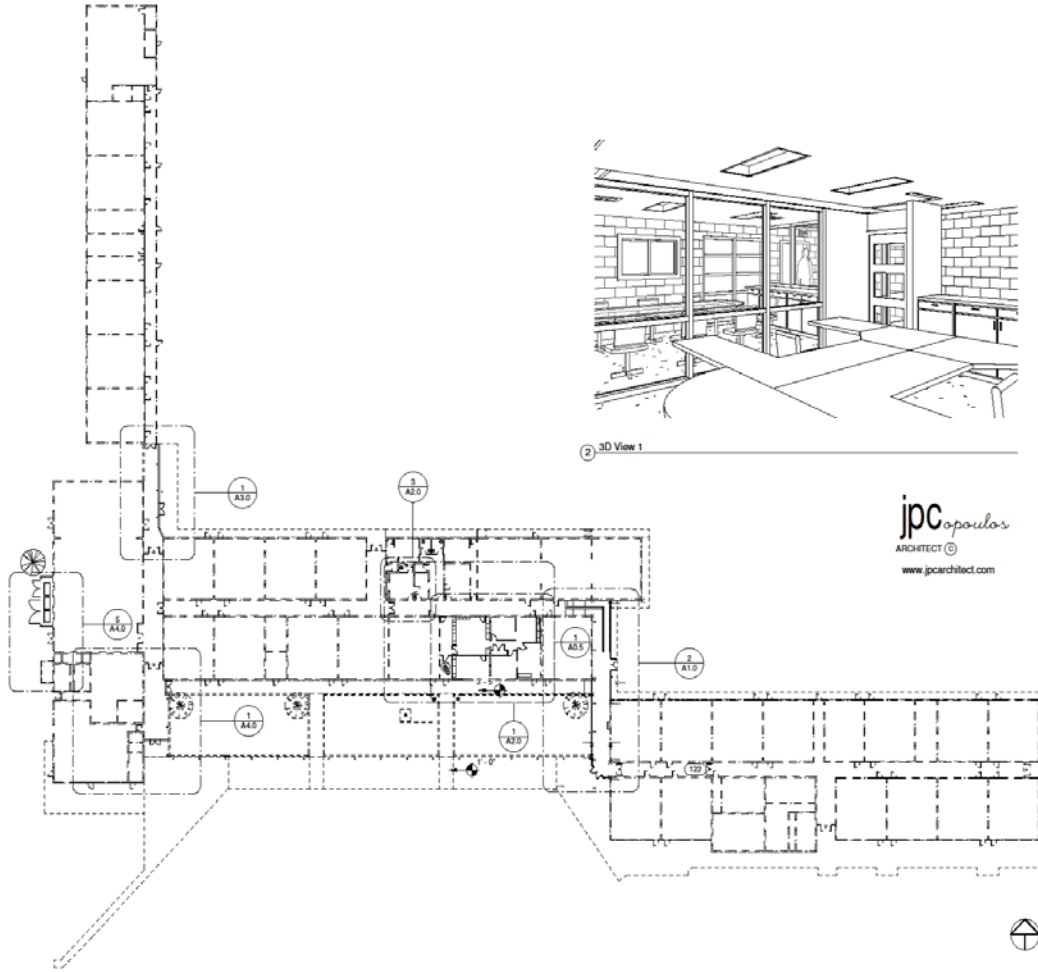


- = New Construction – 2,176 SF
- = Remodel Construction – 886 SF



**FRITSCH ELEMENTARY FLOOR PLAN ENTRY STUDY**

# FRITSCH MAIN ENTRY IMPROVEMENTS



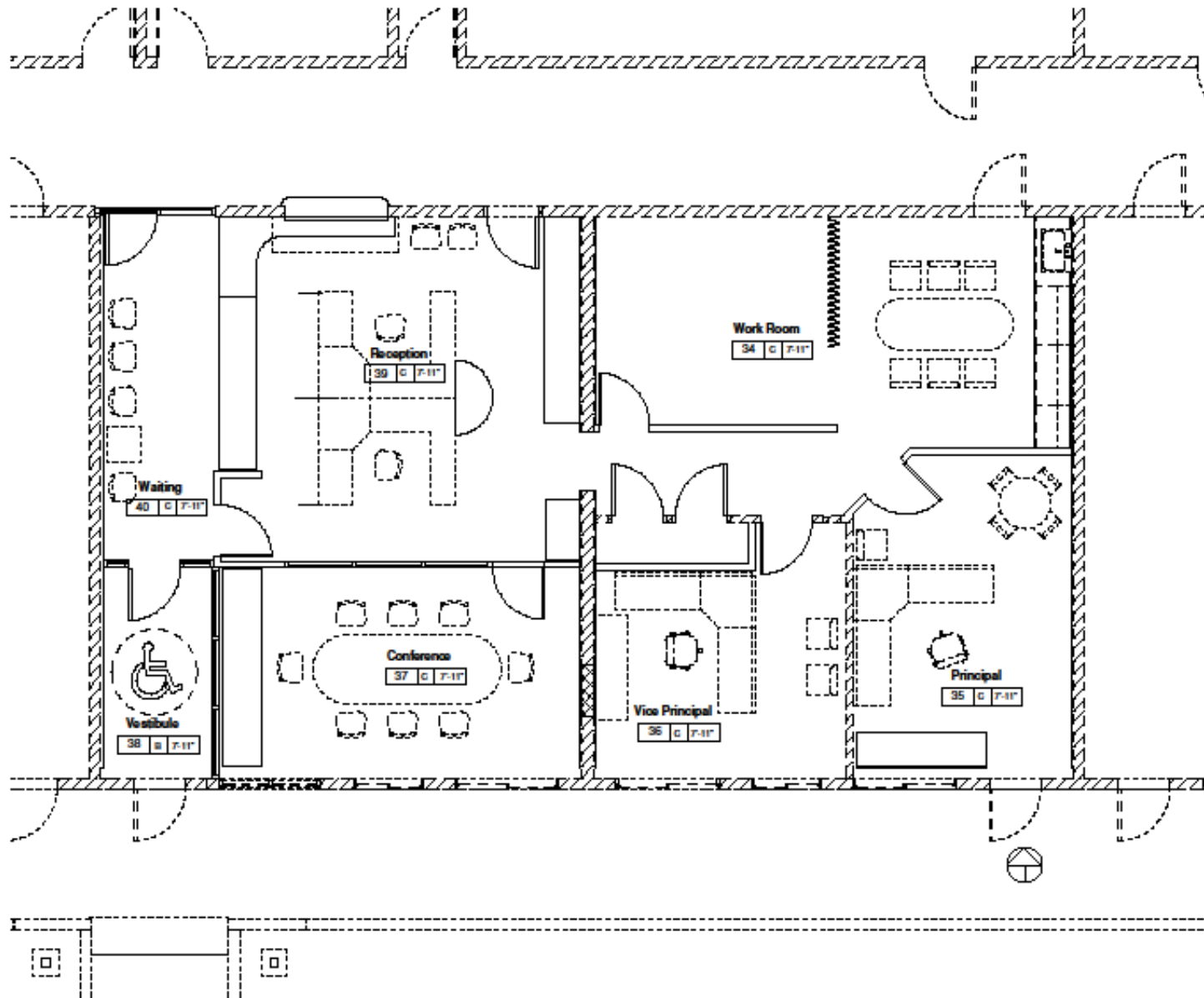
3D View 1

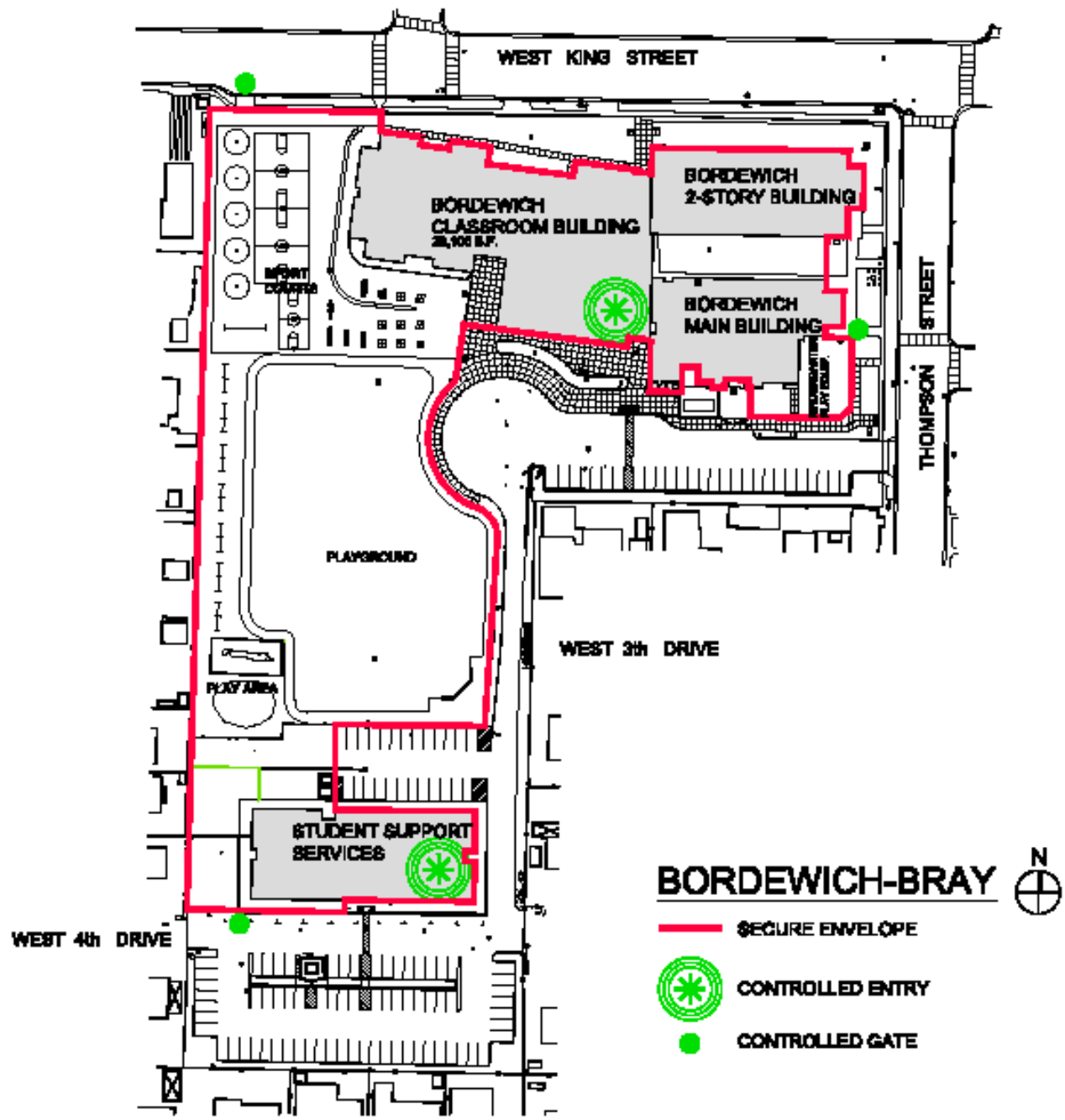
**jpc** *opulos*  
ARCHITECT ©  
[www.jpccarchitect.com](http://www.jpccarchitect.com)

1 Dependent on Level 1  
1/32" = 1'-0"



# FRITSCH MAIN ENTRY IMPROVEMENTS





WEST KING STREET

BORDEWICH CLASSROOM BUILDING  
28,100 S.F.

BORDEWICH 2-STORY BUILDING

BORDEWICH MAIN BUILDING

PLAYGROUND

PLAY AREA

STUDENT SUPPORT SERVICES

WEST 3th DRIVE

WEST 4th DRIVE

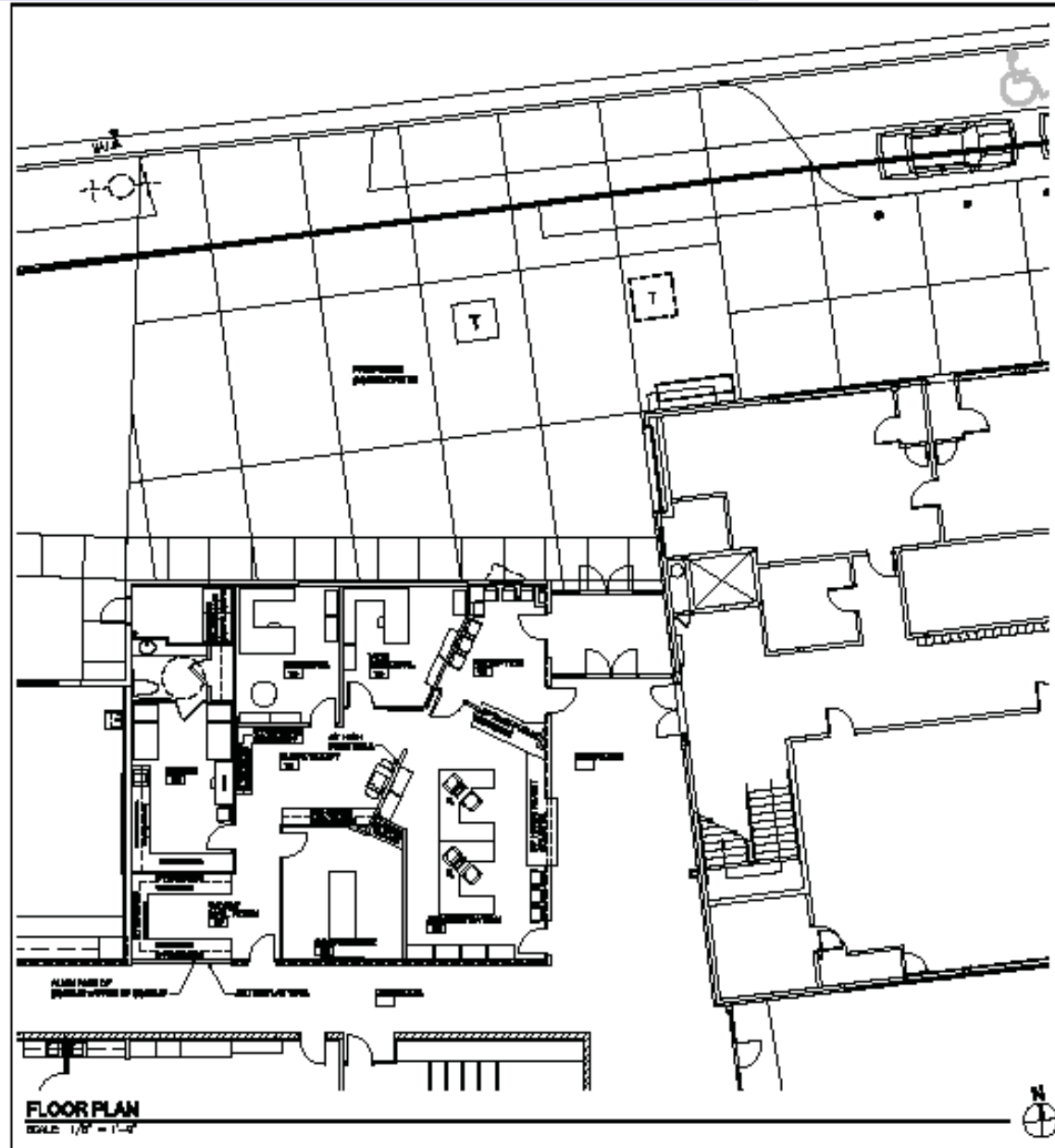
THOMPSON STREET

**BORDEWICH-BRAY**

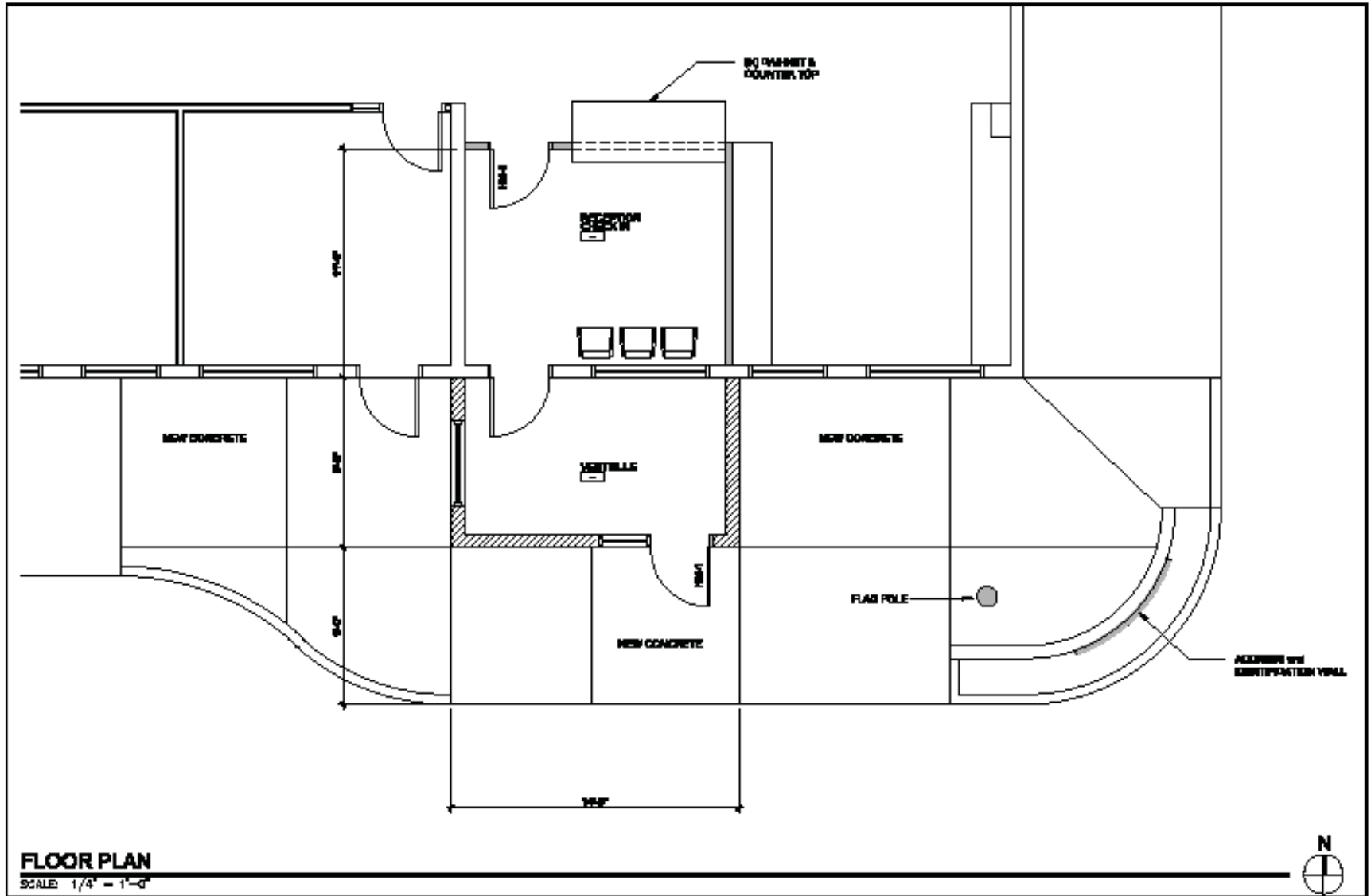


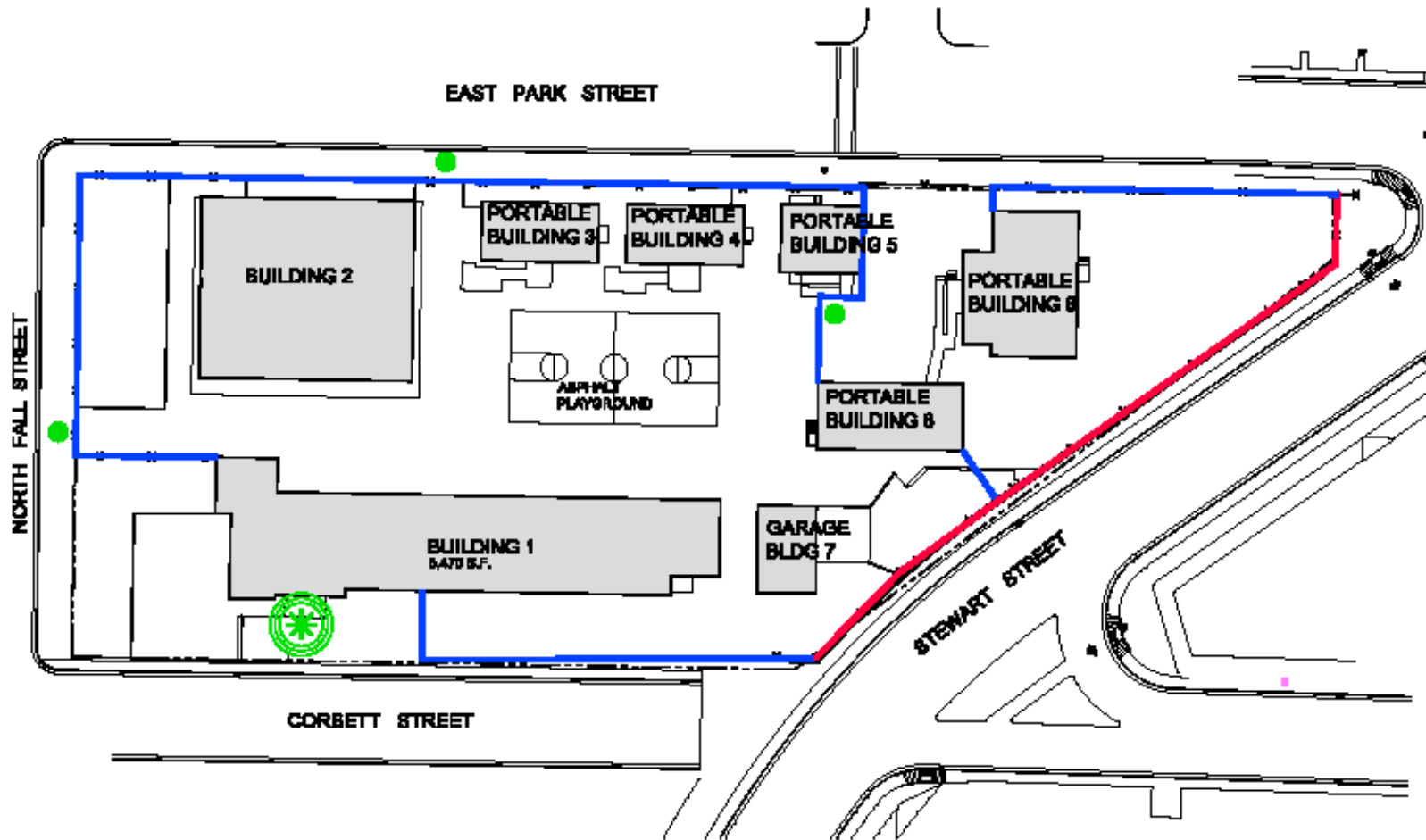
-  SECURE ENVELOPE
-  CONTROLLED ENTRY
-  CONTROLLED GATE

# BORDEWICH BRAY MAIN ENTRY IMPROVEMENTS



# BORDEWICH BRAY MAIN ENTRY IMPROVEMENTS

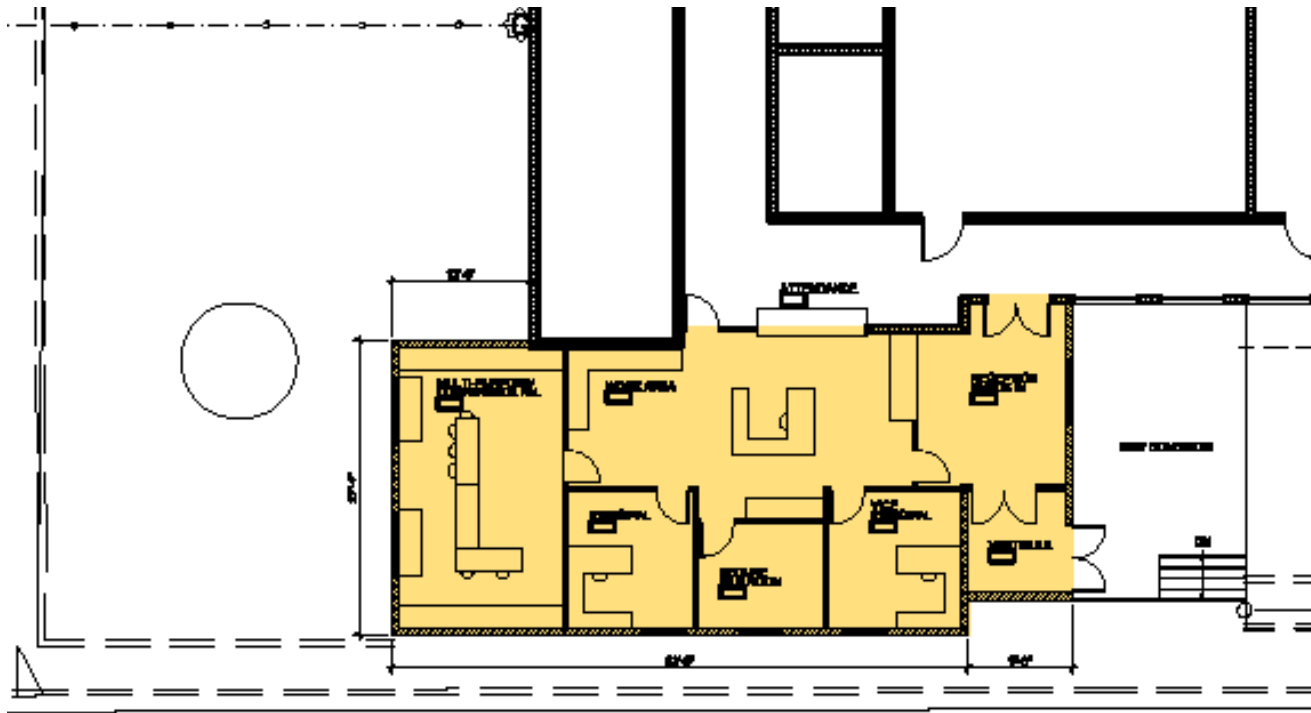




# PIONEER HIGH SCHOOL

-  SECURE ENVELOPE (EXISTING)
-  SECURE ENVELOPE (NEW FENCING +/- 1000 LF)
-  CONTROLLED ENTRY
-  CONTROLLED GATE





NEW CONSTRUCTION - 1740 SF

**FLOOR PLAN ENTRY STUDY - PIONEER HIGH**  
 SCALE 1/8" = 1'-0"



# Understanding the Air Quality Index (AQI)

*This information was obtained from the following website:*  
[www.airnow.gov](http://www.airnow.gov)

The purpose of the AQI is to help you understand what local air quality means to your health. To make it easier to understand, the AQI is divided into six categories:

**\*\*Parents may keep children from participating\*\***

*Please check the following website for local air quality index:*  
<http://nvair.ndep.nv.gov>

Air Quality Index (AQI) Values	Levels of Health Concern	Colors
<i>When the AQI is in this range:</i>	<i>..air quality conditions are:</i>	<i>...as symbolized by this color:</i>
0-50	Good	Green – NO RESTRICTIONS (Air quality is considered satisfactory and air pollution poses little or no risk)
51-100	Moderate	Yellow – NO RESTRICTIONS (Air quality is acceptable; however, there may be a moderate health concern for a very small number of people who are unusually sensitive to air pollution)
101-150	Unhealthy for Sensitive Groups	**Orange – Limit Outdoor Activities; Recess OK, Indoor P.E. ( NO OUTDOOR P.E., PRACTICE OR CONTESTS) – Members of sensitive groups may experience health effects.
151 to 200	Unhealthy	**Red – Indoor Activities (NO OUTDOOR P.E., RECESS, PRACTICE OR CONTESTS) – Everyone may begin to experience health effects; members of sensitive groups may experience more serious health effects.
201 to 300	Very Unhealthy	**Purple – Indoor Activities (NO OUTDOOR P.E., RECESS, PRACTICE OR CONTESTS) – Health warnings of emergency conditions. Entire population is more likely to be affected.
301 to 500	Hazardous	**Maroon – Indoor Activities (NO OUTDOOR P.E., RECESS, PRACTICE OR CONTESTS) – Health alert: everyone may experience more serious health effects.



Each category corresponds to a different level of health concern. The six levels of health concern and what they mean are:

- "Good" AQI is 0 - 50. Air quality is considered satisfactory, and air pollution poses little or no risk.
- "Moderate" AQI is 51 - 100. Air quality is acceptable; however, for some pollutants there may be a moderate health concern for a very small number of people. For example, people who are unusually sensitive to ozone may experience respiratory symptoms.
- "Unhealthy for Sensitive Groups" AQI is 101 - 150. Although general public is not likely to be affected at this AQI range, people with lung disease, older adults and children are at a greater risk from exposure to ozone, whereas persons with heart and lung disease, older adults and children are at greater risk from the presence of particles in the air. .
- "Unhealthy" AQI is 151 - 200. Everyone may begin to experience some adverse health effects, and members of the sensitive groups may experience more serious effects. .
- "Very Unhealthy" AQI is 201 - 300. This would trigger a health alert signifying that everyone may experience more serious health effects.
- "Hazardous" AQI greater than 300. This would trigger a health warnings of emergency conditions. The entire population is more likely to be affected.

*Please check the following website for local air quality index: <http://nvair.ndep.nv.gov>*